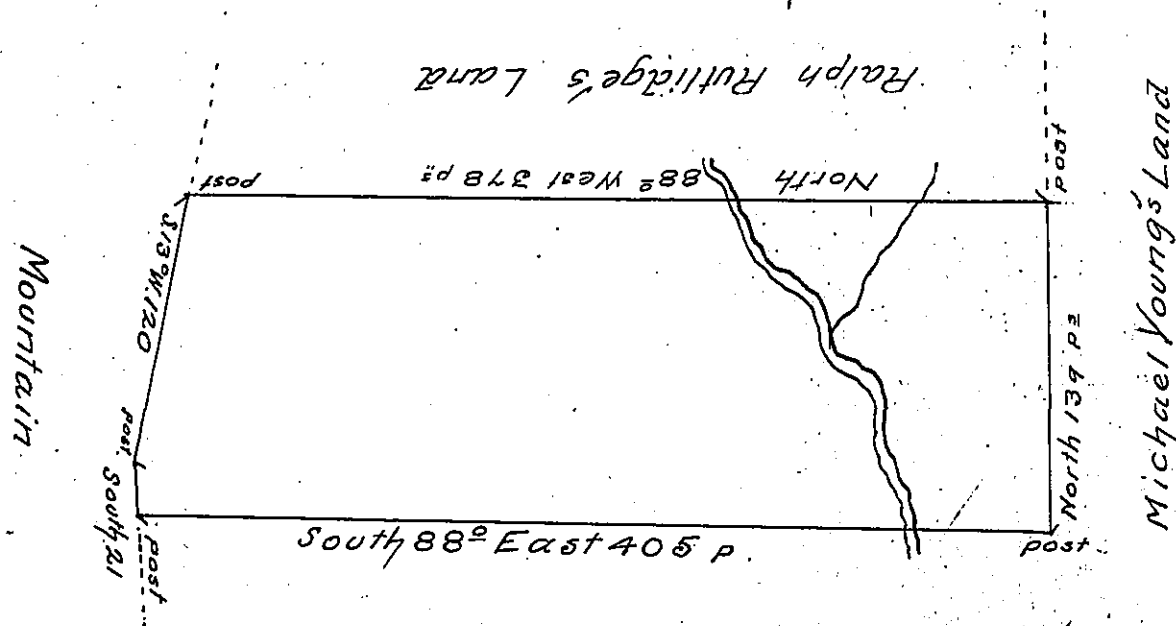


C. 130. 409



John Penicks's Land

C. 130-190

A Draught of a Tract of Land situate on Jennings's Run in the County of Cumberland, containing Three hundred and Twenty two acres and the usual allowance of six acres p. Ct. for roads &c. Surveyed the 11<sup>th</sup> day of October 1767 for Patrick Burk in pursuance of an Order No 4318 dated the 22<sup>d</sup> day of August 1767

Richard Te a Dept. Survey<sup>r</sup>

To John Lukens Esq<sup>r</sup>

Survey<sup>r</sup> Gen<sup>l</sup>

IN TESTIMONY that the above is a copy of the original remaining on file in the Department of Internal Affairs of Pennsylvania, made conformably to an Act of Assembly approved the 16th day of February, 1833, I have hereunto set my Hand and caused the Seal of said Department to be affixed at Harrisburg, this twenty-eighth day of November 1905

*Isaac R. Brown*  
Secretary of Internal Affairs.